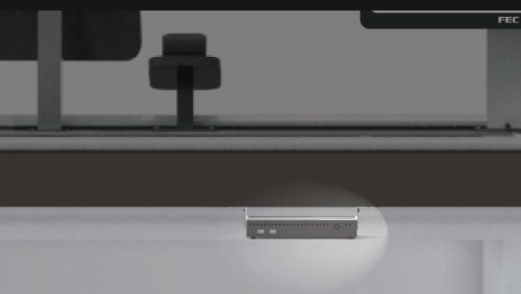


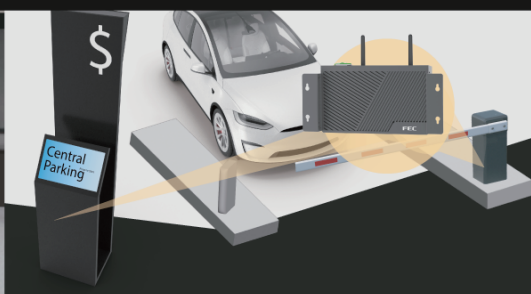


Compact
While Unlimited

XComp Series
XC-373



Unseen,
but Under Control



Easy maintenance,
without distance



Rich IO Connections
versatile possibilities



Easy Mounting

Desk-Mounting Bracket



One Cable Solution









Smart-DD Monitor XM-3010W / XM-3015 / XM-3015W



Well Organized Desktop

Power Adaptor Integrated (Optional)

XComp Series XC-373 SPECIFICATIONS

Model	XC-373 SL	XC-373 DL
Processor	Intel® Celeron® Processor J6412 (1.5M Cache, up to 2.60 GHz)	
Memory	4GB Standard, Max 32GB (1 x SO-DIMM DDR4)	
Storage	1 x M.2 M Key PCIe GenIII (Tray,Default) (No Internal Socket Option)	1 x M.2 M Key PCIe GenIII (Tray,Default) 1 x M.2 SATAIII (Internal Socket Optional)
Wireless	802.11ac Wi-Fi + Bluetooth4.2 (Optional)	
OS	Windows 10 Enterprise Windows 11 Enterprise Linux (Per Request)	
TPM	TPM 2.0: dTPM and fTPM	
Mounting	VESA 75 x 75 mm	
Certification	FCC / CE Class B	
Construction/Color	Aluminum + Metal / Galaxy Grey	
Temperature	Operation: 0°C ~ 40°C (32°F ~ 104°F) Storage: -20°C ~ 60°C (-4°F ~ 140°F)	
Rear IO Port	2 x COM (RJ45) 3 x USB 2.0 1 x USB 3.0 1 x Giga LAN 1 x HDMI Port 1 x Smart-DD  1 x DC-IN (19V) 	1 x Cash Drawer (RJ11) 2 x COM (RJ45) 1 x USB 2.0 3 x USB 3.0 1 x Giga LAN 1 x HDMI Port 1 x Smart-DD  1 x DC-IN (20V) 1 x Smart-IO  
Front IO Port	2 x USB 2.0	
Power	19V/65W External Adapter	20V/90W 20V/130W ¹ External Adapter
Dimensions (W x H x D)	Product: 229 x 32 x 140 mm in Carton: 323 x 222 x 120 mm	Product: 229 x 59 x 140 mm in Carton: 323 x 222 x 162 mm
Weight	Net: 1.2 Kg Gross: 1.6 Kg	Net: 1.6 Kg Gross: 2.1 Kg
Optional		2nd IO - 1 1 x COM (DB9) 4 x USB 2.0 1 x COM (RJ45) 1 x DC-Out 12V  2nd IO - 2 1 x PUSB 24V  3 x PUSB 12V 2nd IO - 3 1 x LAN (RJ45) 4 x USB 2.0 1 x COM (RJ45) 1 x DC-Out 12V  ¹ Optional 2 nd IO - 2 requires 20V/130W External Adapter

